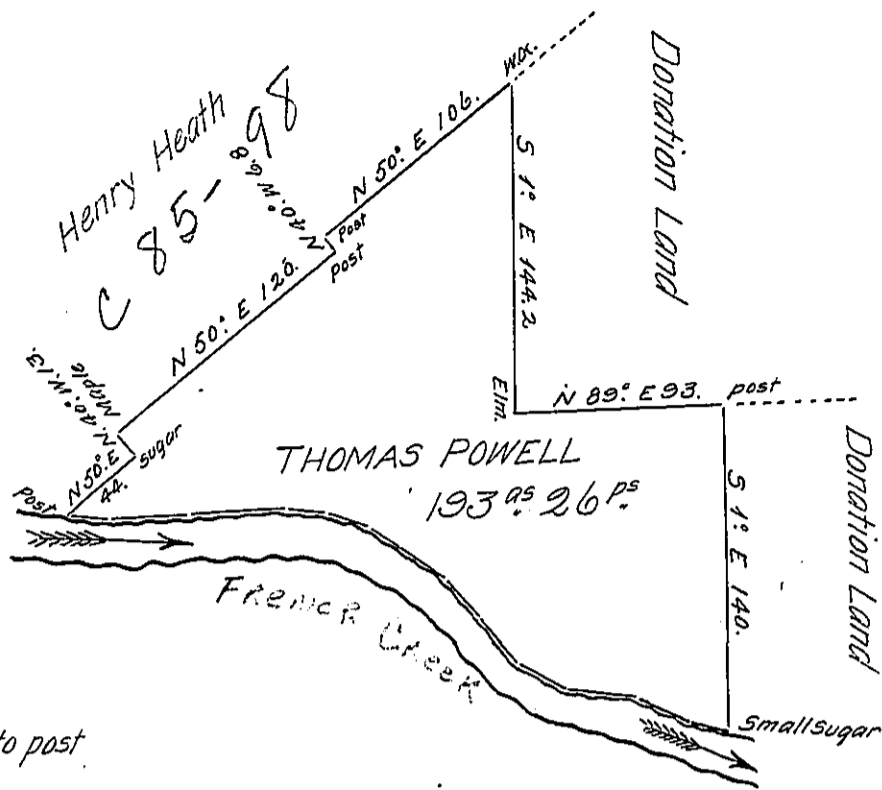


Courses and distances up French Creek beginning at a Sugar tree

- N 80° W 10.1
- N 73½° W 14.
- N 67½° W 24.
- N 80½° W 32.4
- N 67° W 23.
- N 42½° W 25.4
- N 41° W 23.4
- N 56½° W 38.8
- N 70° W 20.
- N 83° W 14.
- N 87° W 80.5
- N 81½° W 15.8

321.4 Perches from Sugar tree to post



In pursuance of a Warrant for 184 Acres of land dated the 31st of December 1801, was Surveyed the 30th day of June 1802 for Thomas Powell the above described Tract of land containing 193 Acres 26 perches and allowance of six per Cent for Roads & C. Situate in Mead Township Crawford County.

William Mc Arthur D.S.

To Samuel Cochran Esquire
Surveyor General.

IN TESTIMONY that the above is a copy of the original remaining on file in the Department of Internal Affairs of Pennsylvania, made conformably to an Act of Assembly approved the 16th day of February, 1833, I have hereunto set my Hand and caused the Seal of said Department to be affixed at Harrisburg, this Seventeenth day of May 1906.

Isaac D. Brown
Secretary of Internal Affairs.